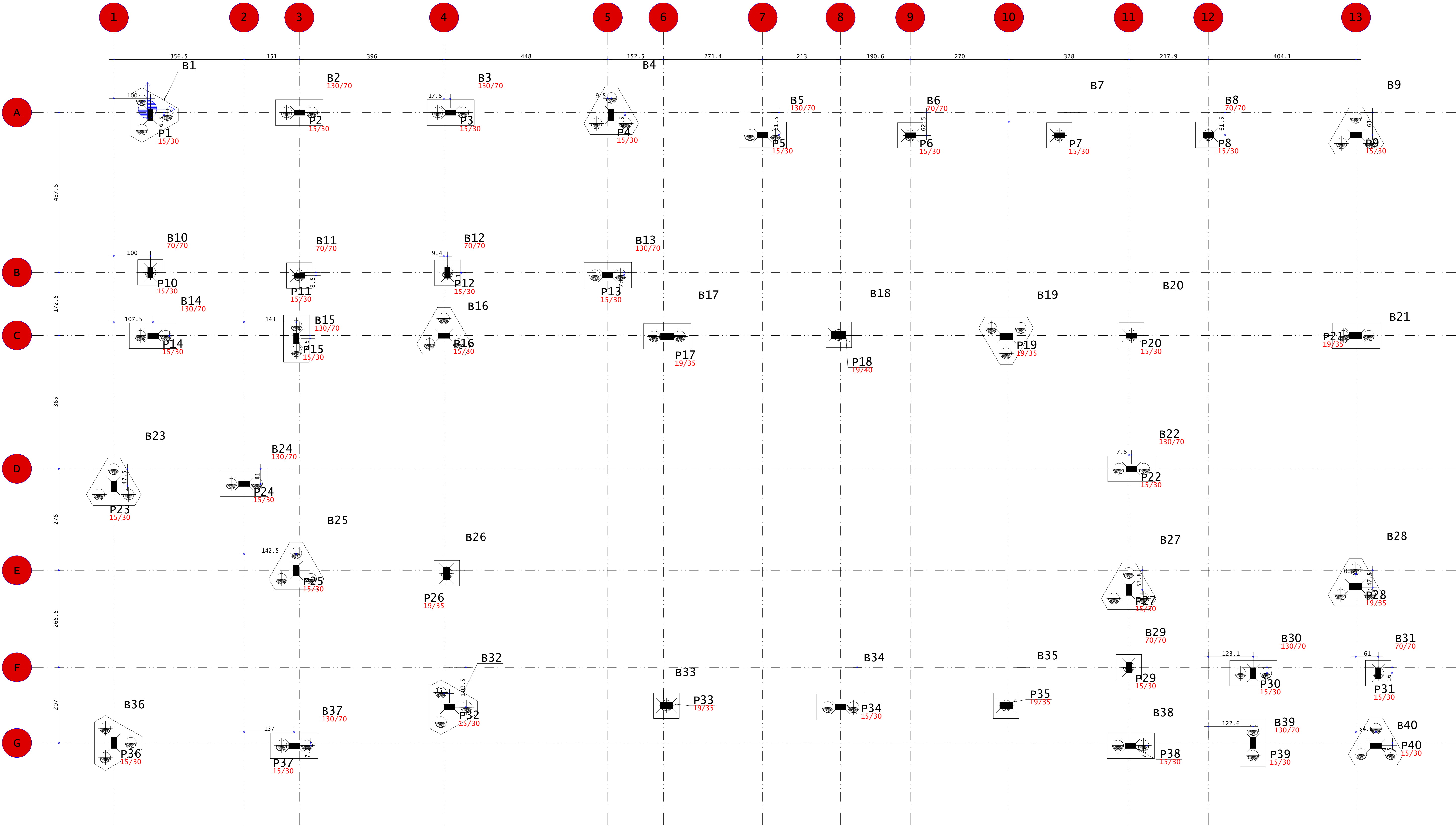


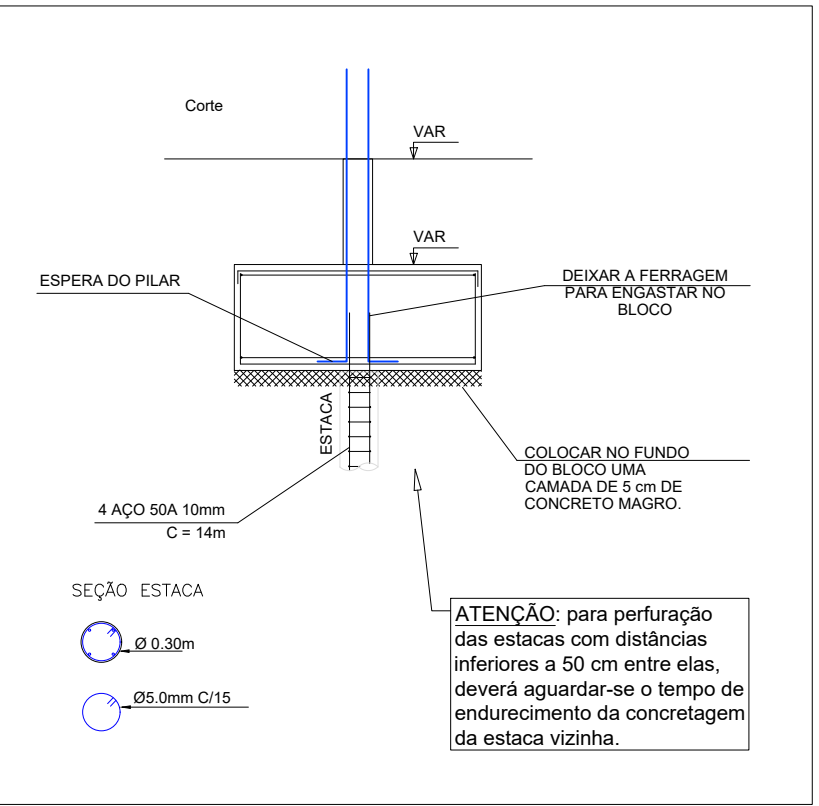
Planta Fundacao

Escala 1:50



Baricentros de pilares			
Pilar	X cm	Y cm	
B1	8.0	-15.5	
B2	415.5	-9.0	
B3	829.0	-447.5	
B4	1269.0	-15.5	
B5	1683.4	-71.5	
B6	2087.0	-71.5	
B7	2495.0	-71.5	
B8	2902.9	-70.0	
B9	3307.0	-70.0	
B10	8.0	-446.5	
B11	415.5	-455.0	
B12	820.9	-447.5	
B13	1259.5	-454.0	
B14	15.5	-620.0	
B15	407.5	-627.5	
B16	811.5	-619.0	
B17	1421.8	-621.8	
B18	1891.4	-617.5	
B19	2349.5	-621.7	
B20	2692.5	-619.0	
B21	3305.0	-619.4	
B22	2692.5	-984.0	
B23	-92.0	-1031.5	
B24	264.5	-1025.0	
B25	407.0	-1262.0	
B26	813.0	-1270.3	
B27	2685.0	-1315.8	
B28	3305.2	-1305.8	
B29	2685.0	-1327.5	
B30	3026.0	-1543.5	
B31	3368.0	-1543.5	
B32	826.5	-1637.0	
B33	1420.1	-1632.5	
B34	1896.5	-1636.5	
B35	2349.5	-1632.5	
B36	-92.0	-1734.5	
B37	401.5	-1742.0	
B38	2690.5	-1742.0	
B39	3025.5	-1734.5	
B40	3361.5	-1742.0	
P1	8.0	-15.5	
P2	415.5	-9.0	
P3	829.0	-9.0	
P4	1269.0	-15.5	
P5	1683.4	-70.5	
P6	2087.0	-71.5	
P7	2495.0	-71.5	
P8	2902.9	-70.5	
P9	3307.0	-70.0	
P10	8.0	-446.5	
P11	415.5	-455.0	
P12	820.9	-447.5	
P13	1259.5	-454.0	
P14	15.5	-620.0	
P15	407.5	-627.5	
P16	811.5	-619.0	
P17	1421.8	-621.8	
P18	1891.4	-617.5	
P19	2349.5	-621.7	
P20	2692.5	-619.0	
P21	3305.0	-619.4	
P22	2692.5	-984.0	
P23	-92.0	-1031.5	
P24	264.5	-1025.0	
P25	407.0	-1262.0	
P26	813.0	-1270.3	
P27	2685.0	-1315.8	
P28	3305.2	-1305.8	
P29	2685.0	-1327.5	
P30	3026.0	-1543.5	
P31	3368.0	-1543.5	
P32	826.5	-1637.0	
P33	1420.1	-1632.5	
P34	1896.5	-1636.5	
P35	2349.5	-1632.5	
P36	-92.0	-1734.5	
P37	401.5	-1742.0	
P38	2690.5	-1742.0	
P39	3025.5	-1734.5	
P40	3361.5	-1742.0	

DETALHE - ESTACAS GENÉRICO:

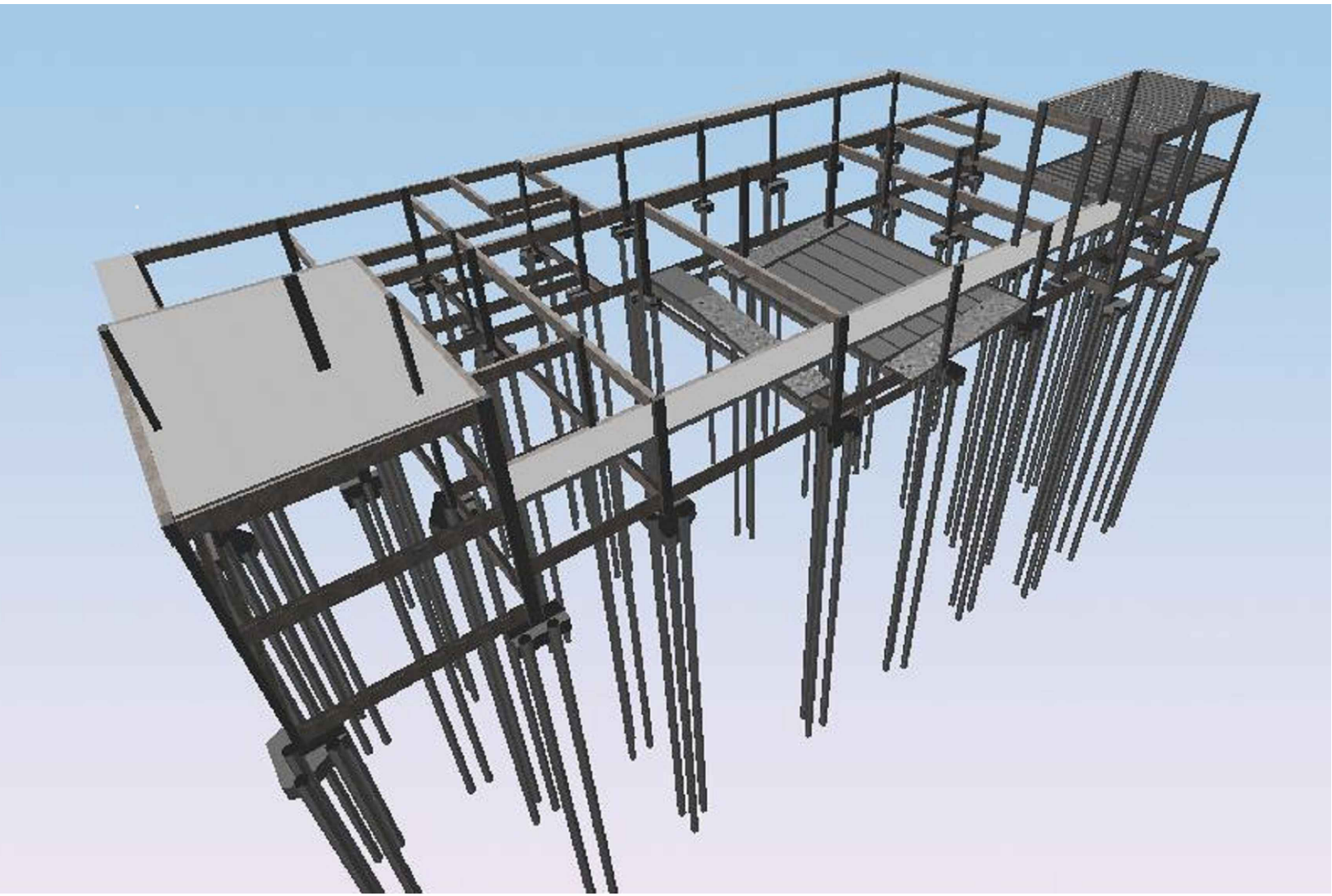


OBS:
AS ESTACAS DEVEM POSSUIR TAMANHO VARIÁVEL MÉDIO DE 10.00 METROS DE PROFUNDIDADE CONFORME ESTUDO DE SONDAGEM.
DIÂMETRO MÉDIO DE 30 CM. COM CONCRETO MOLDADO IN LOCO, SENDO COMPOSTAS POR ARMAÇÃO COM 04 FERROS DE AÇO S24 DE 10MM.
O NÚMERO DE ESTACAS POR BLOCO É VARIÁVEL.

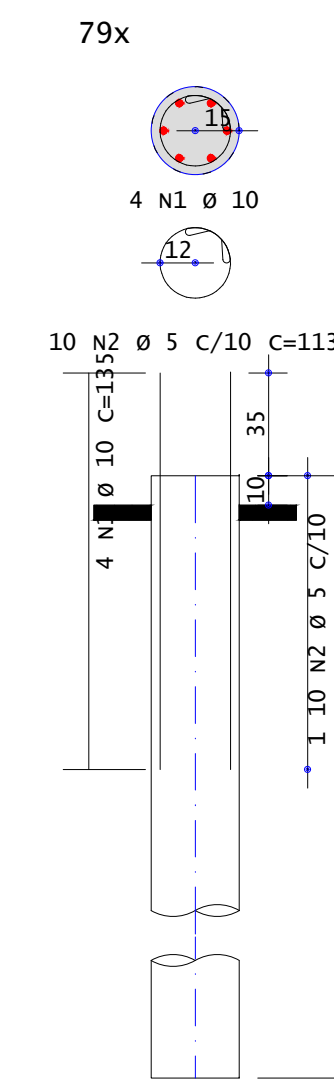
	AÇO	POS	BIT	QUANT	COMPRIMENTO UNIT	TOTAL
B1	50A	1	8	12	162	1944
	50A	2	6.3	14	138	1988
	50A	3	6.3	3	445	1335
	60A	4	6.3	7	188	2520
B2	60A	1	6.3	2	391	782
	50A	2	6.3	4	138	552
	50A	3	6.3	4	169	507
	50A	4	6.3	7	188	1316
B3	50A	1	6.3	2	392	784
	50A	2	10	4	169	676
	50A	3	6.3	4	137	548
	50A	4	6.3	7	186	1302
B4	50A	1	8	12	162	1944
	50A	2	6.3	14	138	1988
	50A	3	6.3	3	445	1335
	60A	4	6.3	7	188	2520
B5	60A	1	6.3	2	391	782
	50A	2	6.3	4	138	552
	50A	3	10	3	169	507
	50A	4	6.3	7	188	1316
B6	50A	1	10	3	195	385
	60A	2	3	6	641	3846
	50A	3	10	3	197	591
	60A	2	5	10	1350	5400

RESUMO DE AÇO			
AÇO	BIT	COMPR	PESO
60A	mm	m	kgf
50A	6.3	130	32
50A	8	39	15
50A	10	5164	3189
Peso Total	60A =		18 kgf
Peso Total	50A =		3236 kgf

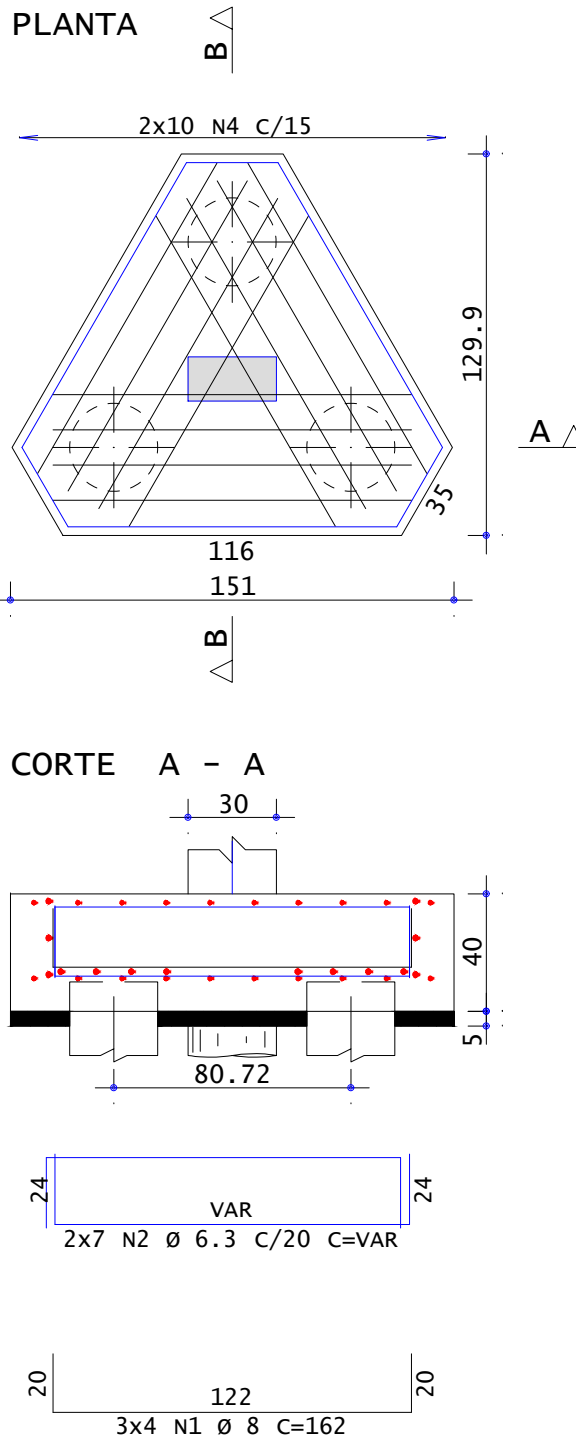
LAJES TRELIÇADAS
TODAS AS LAJES TRELIÇADAS UTILIZARÃO MALHA 6.0mm, TRELIÇAS TR 12645 E ENCHIMENTO COM LAJOITA CERÂMICA 20x30x12cm.



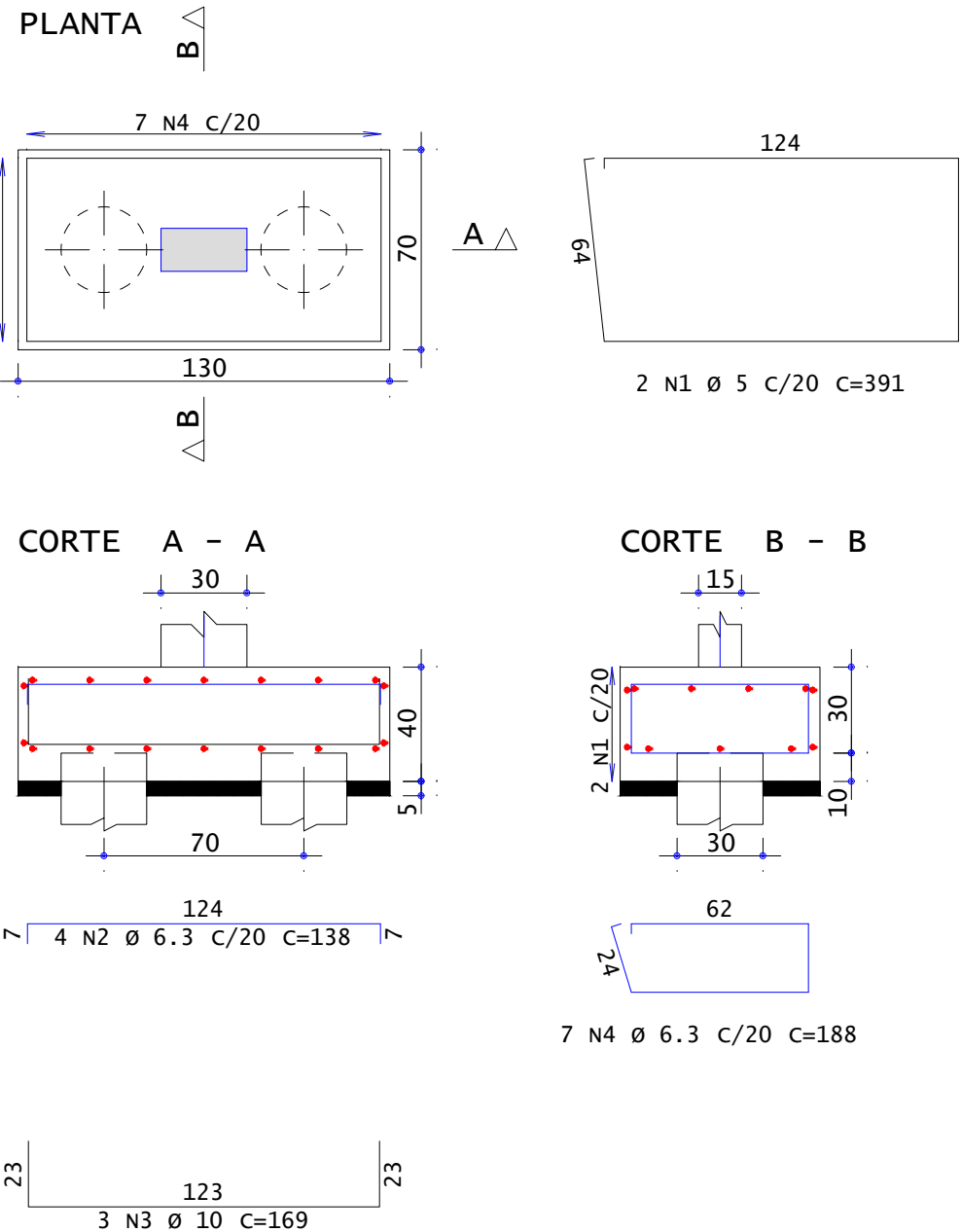
EST30L15 (ESCALA 1:25)



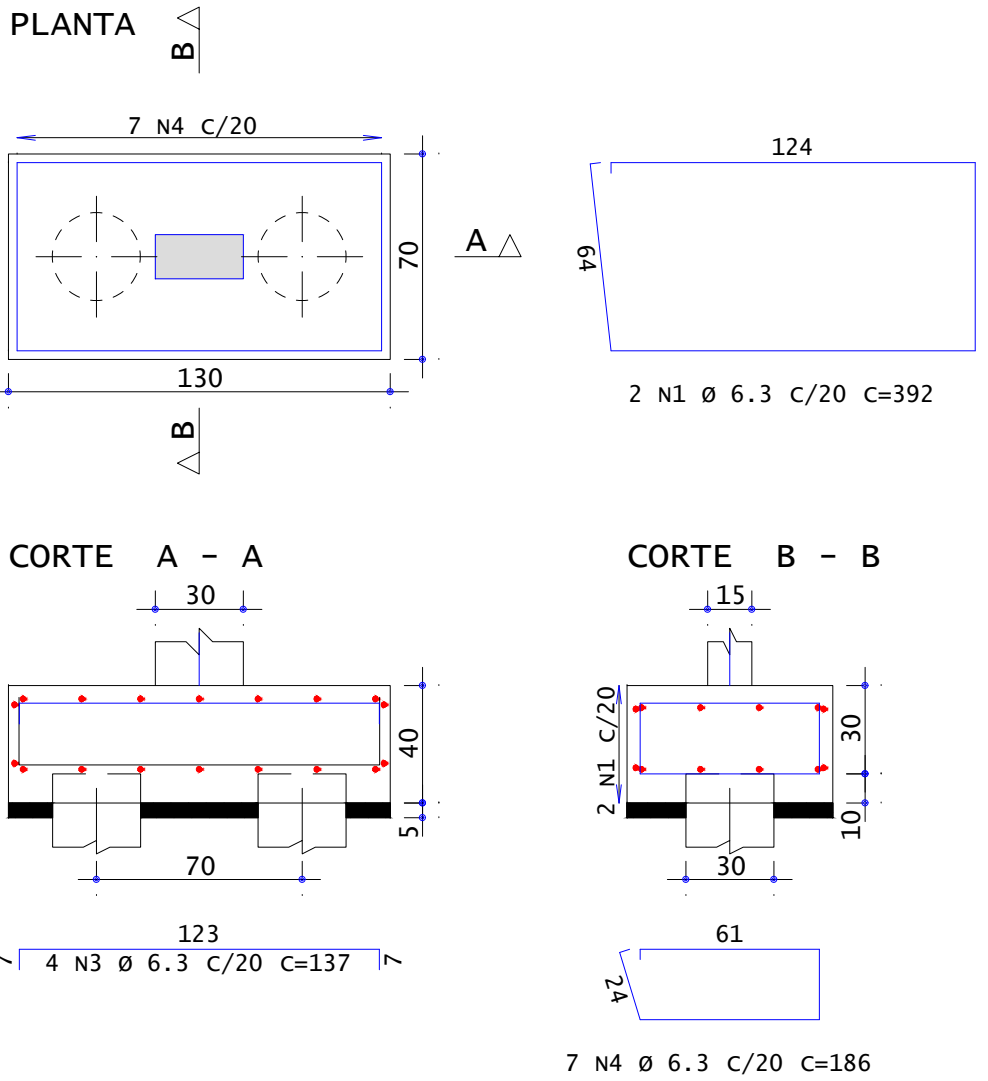
B1 (ESCALA 1:25)



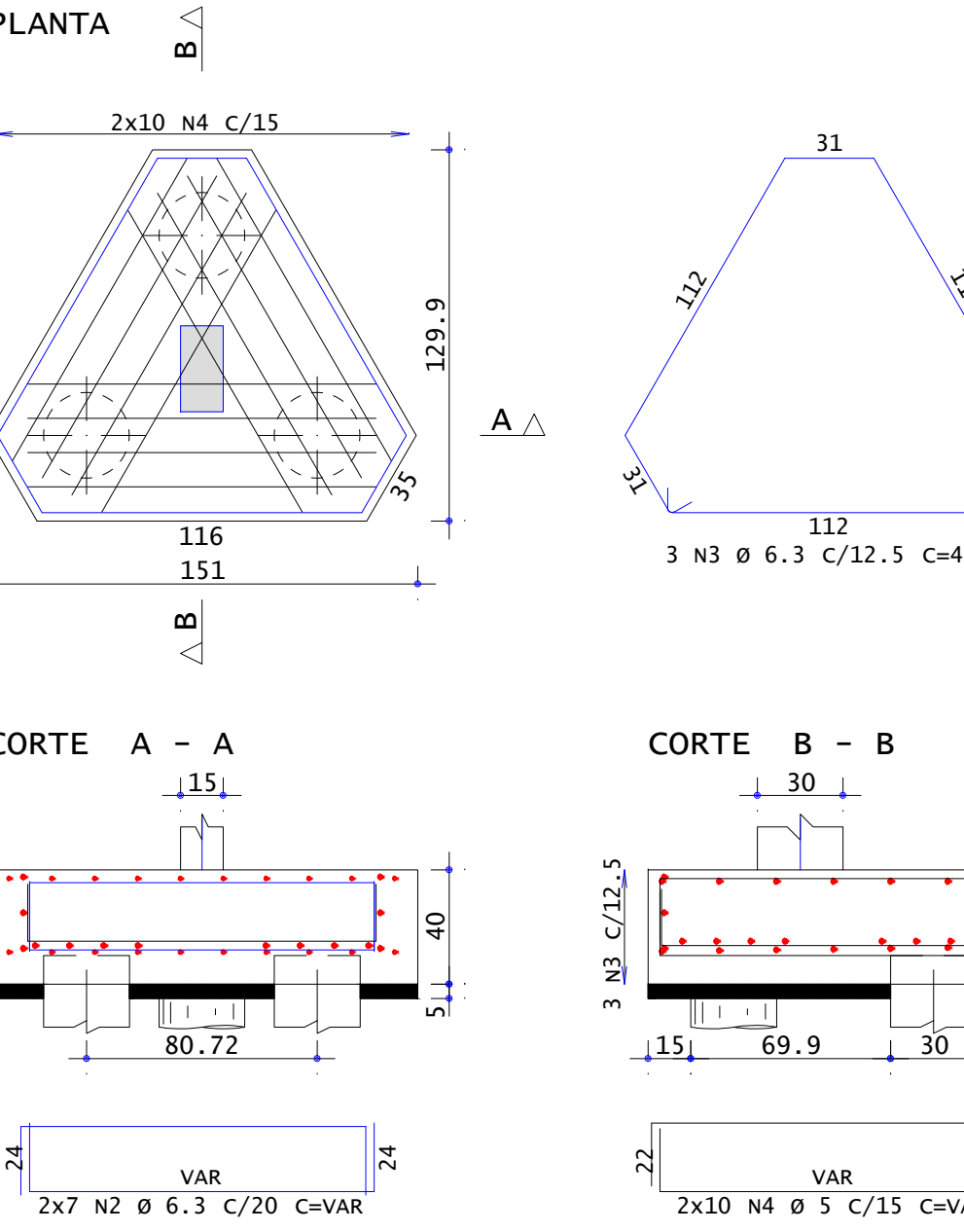
B2 (ESCALA 1:25)



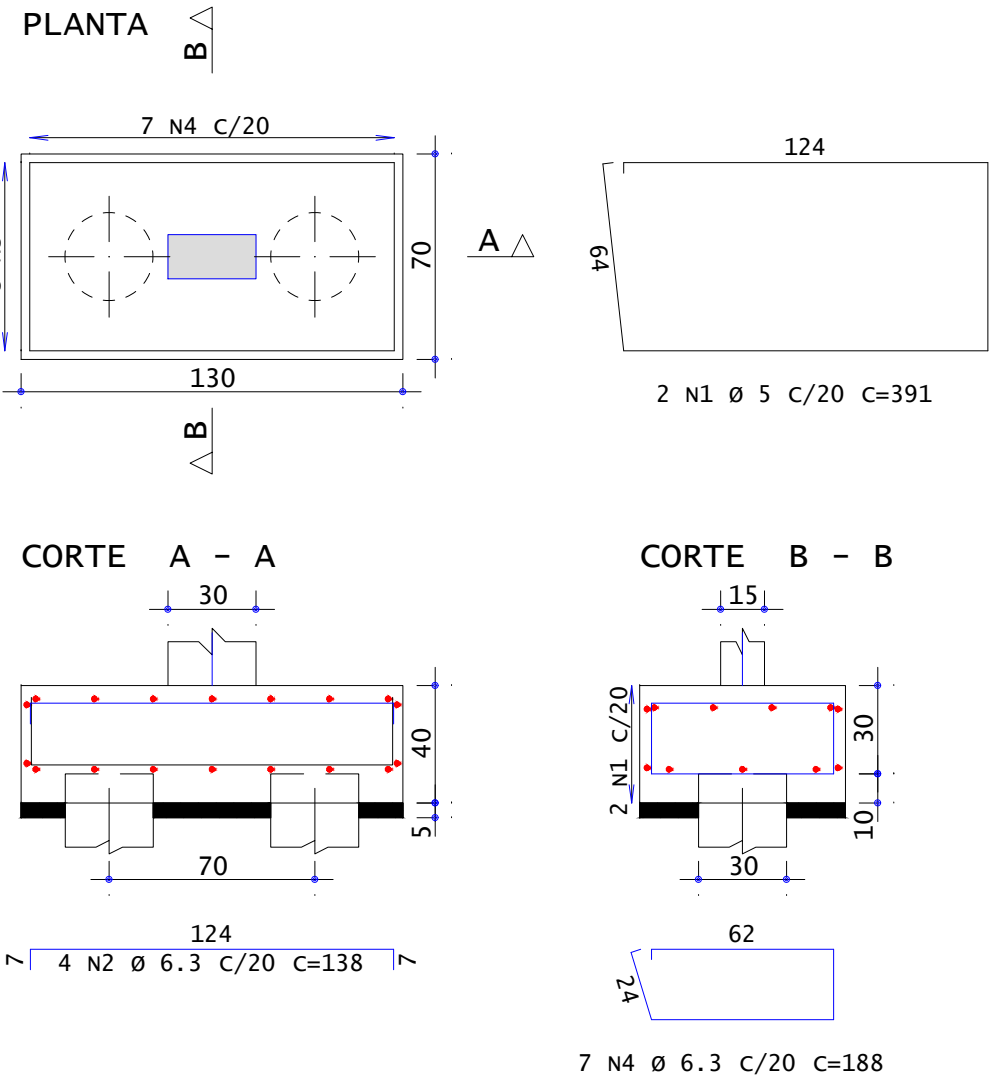
B3 (ESCALA 1:25)



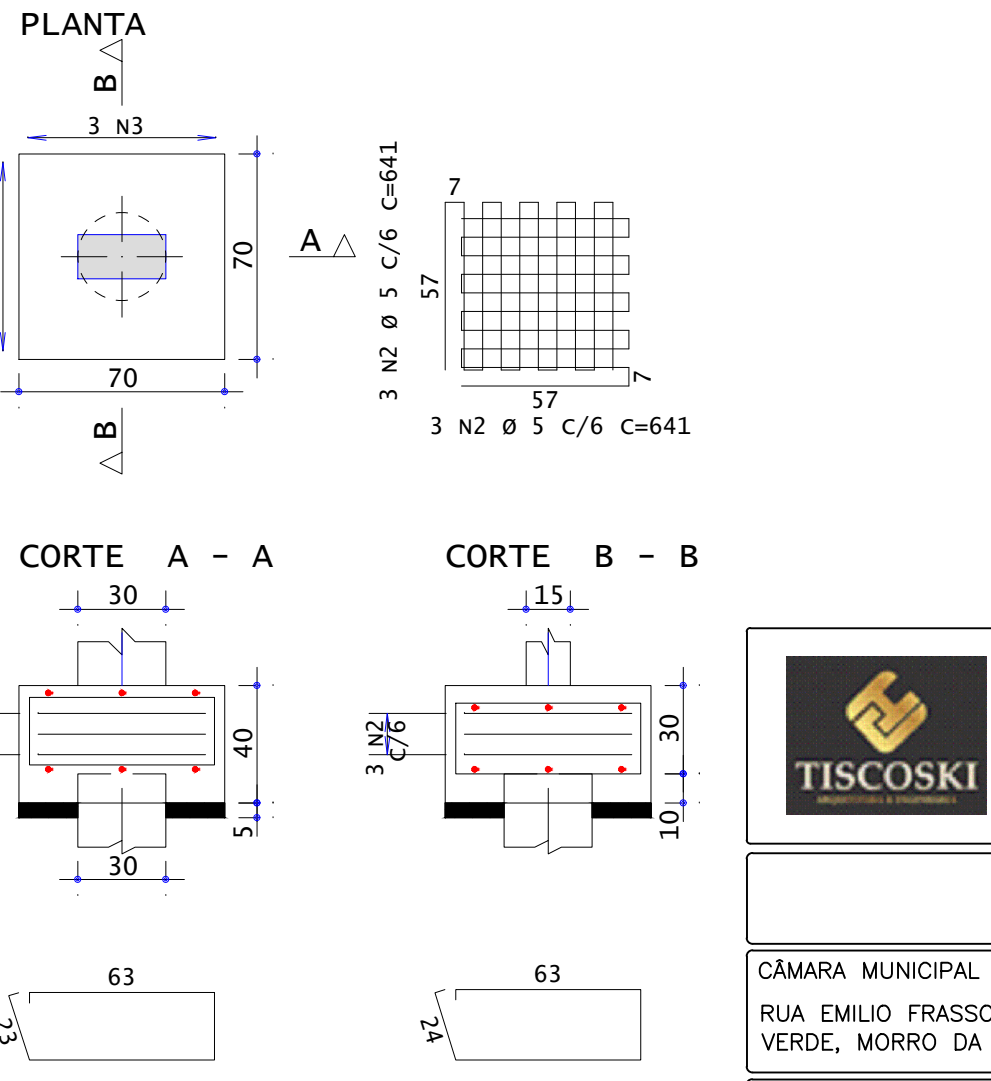
B4 (ESCALA 1:25)



B5 (ESCALA 1:25)



B6 (ESCALA 1:25)



TISCOSKI
ARQUITETURA E ENGENHARIA

PROJETO ESTRUTURAL

CÂMARA MUNICIPAL DE MORRO DA FUMAÇA
RUA EMILIO FRASSON, 130, BARRIO MONTE VERDE, MORRO DA FUMAÇA/SC

CONTEÚDO
FRANQUISA DE FUNDAÇÃO
DETALHAMENTO DE BLOCOS

PRÓPRIETÁRIO:
MUNICÍPIO DE MORRO DA FUMAÇA
CNPJ: 83.000.323/0001-02

RESPONSÁVEL TÉCNICO:
HJ ARQUITETURA E ENGENHARIA LTDA
CREA-SC 187117-2
JULIANA TISCOSKI - CREA-SC 123317-7

ESCALA INDICADA

DESENHO AMANDA

ÁREA TOTAL 554,55m²

DATA AGOSTO/2025

01/15